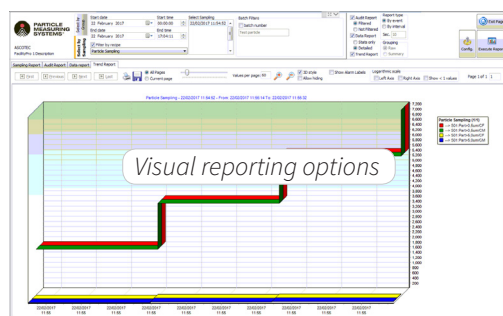
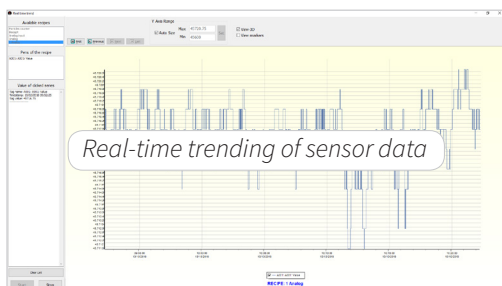
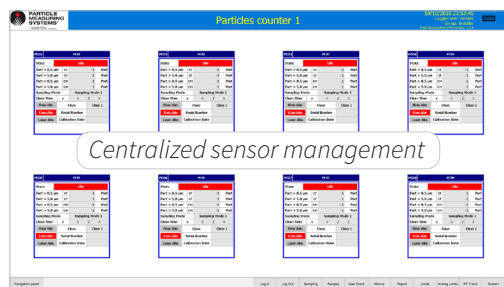


# Pharmaceutical Net Pro Software

Data Management, Reporting, and Automation



## BENEFITS

- Designed specifically for pharmaceutical environmental monitoring
- Integration and control of viable and non-viable sampling
- 21 CFR Part 11 compliant for high data integrity
- Ultimate efficiency and reduced error
- Simple installation and validation
- Flexible integration

## FEATURES

- Map for visual indication of viable, nonviable, and environmental status
- Configurable display
- Alarm notification and e-signature acknowledgement
- Configurable reports including audit, statistics, and trend reports
- Batch identifiers and data filters
- Automation of sample collection, driven by recipes
- Cubic-meter algorithms for nonviable data
- Volume-based or time-based viable sampling
- Remote data viewing and reporting

## APPLICATIONS

Monitoring of critical environments including:

- Filling lines
- Isolators and RABS
- Blow-Fill-Seal
- Lyophilizer processes and transfer carts
- Biosafety cabinets and flow hoods
- General cleanroom and facility monitoring

## Environmental Monitoring

Pharmaceutical Net Pro software is a monitoring, reporting and management tool. By distributing the data processing to the FacilityPro® Processor, Pharmaceutical Net Pro delivers high reliability and data integrity. The software provides the interface for managing viable, nonviable, and environmental data, improving the efficiency of production operations and quality investigations.

## Industrial Automation Architecture

The processor handles incoming data, while the software provides a visual interface for data management, display, and storage. System design ensures reliability and data integrity, while also promoting streamlined, simplified user controls.

The software offers intelligent features such as data mapping, alarming, reporting, and recipe-driven sampling. Up to five clients can be used for remote access and viewing of data.



*Without measurement there is no control*

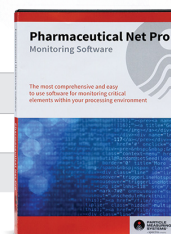
# Pharmaceutical Net Pro Software

Data Management, Reporting, and Automation

## Hardware Specifications

<b>DISPLAY RESOLUTION</b>	Minimum 1280 x 1024
<b>PROCESSOR</b>	Intel® Core Processor i3 2.2 GHz
<b>OPERATING SYSTEM</b>	Windows® 10 64 bit OR Windows Server 2016 Standard 64 bit
<b>RAM</b>	Minimum 8 GB
<b>HARD DISK C</b>	1 TB (for OS)
<b>HARD DISK D</b>	1 TB (for Data)

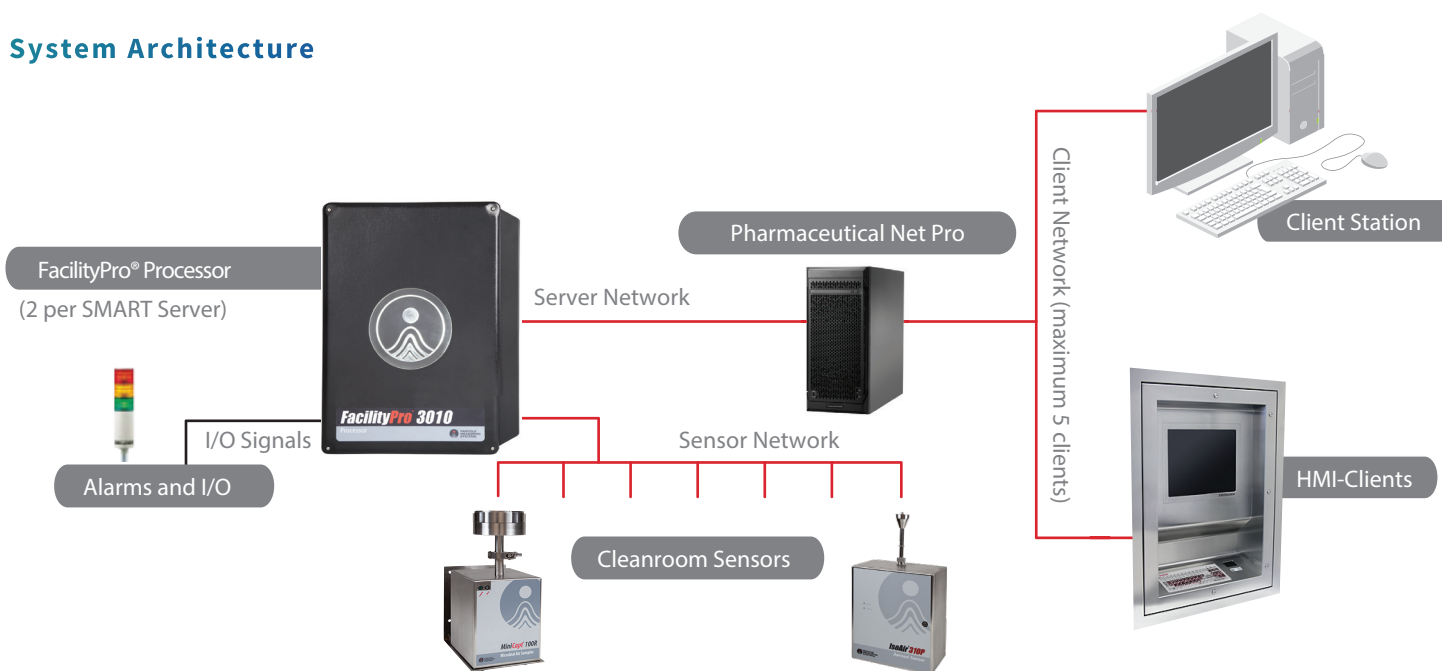
System Size	Particle and Microbial	Digital Input / Digital Output	Analog Input
<b>SMALL</b>	6 sensors	8 / 16	8
<b>MEDIUM</b>	12 sensors	16 / 32	48
<b>LARGE</b>	128 sensors	64 / 128	192 (+ 32 virtual)



### System Hardware

<b>FACILITYPRO PROCESSORS</b>	5010, 3010, 1010
-------------------------------	------------------

## System Architecture



# Pharmaceutical Net Pro Software

Data Management, Reporting, and Automation

## Feature Comparison

	Pharmaceutical Net Pro	FacilityPro SCADA NG Server
Viable / nonviable / environmental integration	Y	Y
21 CFR Part 11 compliant	Y	Y
Facility map for data and status visualization	Y	Y
Configurable display	Y	Y
Alarm notification and e-signatures	Y	Y
Configurable reports including audit, statistics, and trend reports	Y	Y
Batch identifiers and data filters	Y	Y
Automated sample collection, recipe-driven	Y	Y
Cubic meter algorithms for nonviable data	Y	Y
Volume-based or time-based viable sampling	Y	Y
Client software for remote viewing and reports	Y (2 or 5)	Y (25 max)
Maximum number of FacilityPro Processors	2	3
Built on GE Proficy iFIX SCADA and Historian DB	-	Y
Redundant servers	-	Y
Third-party PLC support	-	Y
Email software support	-	Y
Language support	English, French, German, Italian, Spanish, Portuguese, Swedish, Russian, Chinese (Simplified and Traditional), Korean, Japanese	

-: not supported    y: supported

### HEADQUARTERS

5475 Airport Blvd  
Boulder, Colorado 80301 USA  
T: +1 303 443 7100, +1 800 238 1801

Instrument Service & Support  
T: +1 800 557 6363

Customer Response Center  
T: +1 877 475 3317  
E: info@pmeasuring.com



### GLOBAL OFFICES

AUSTRIA  
T: +43 512 390 500  
E: pmsaustria@pmeasuring.com

BENELUX  
T: +32 10 23 71 56  
E: pmsbelgium@pmeasuring.com

BRAZIL  
T: +55 11 5188 8227  
E: pmsbrazil@pmeasuring.com

CHINA  
T: +86 21 6113 3600  
E: pmschina@pmeasuring.com

FRANCE  
T: 33(0)1 60 10 32 96  
E: pmsfrance@pmeasuring.com

GERMANY  
T: +49 6151 6671 632  
E: pmsgermany@pmeasuring.com

ITALY  
T: +39 06 9053 0130  
E: pmsrl@pmeasuring.com

JAPAN  
T: +81 3 5298 8175  
E: pmsjapan@pmeasuring.com

KOREA  
T: +82 31 286 5790  
E: pmskorea@pmeasuring.com

MEXICO  
T: +52 55 2271 5106  
E: pmsmexico@pmeasuring.com

NORDIC  
T: +45 707 028 55  
E: pmsnordic@pmeasuring.com

PUERTO RICO  
T: +1 787 718 9096  
E: pmspuertorico@pmeasuring.com

SINGAPORE  
T: +65 6496 0330  
E: pmsingapore@pmeasuring.com

SWITZERLAND  
T: +41 71 987 01 01  
E: pmsswitzerland@pmeasuring.com

TAIWAN  
T: 886-3-5525300 Ext: 301  
E: pms taiwan@pmeasuring.com